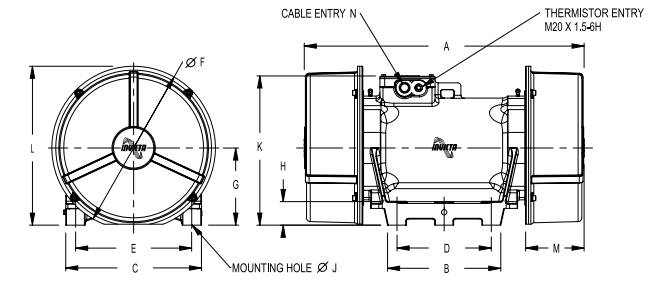




# BLz Range

2 POLE - 2880 / 3456 RPM - 50/60 HERTZ

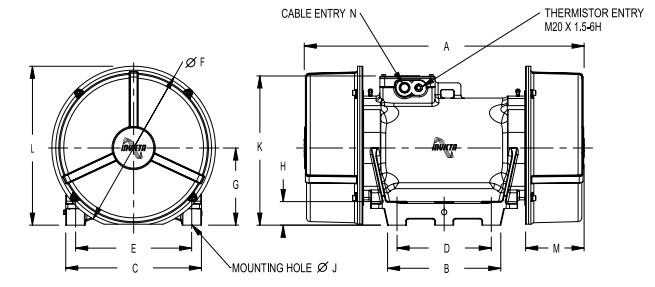


| Description<br>Description<br>Beschreibung |                          | Mechanical Specification<br>Caractéristiques Mécaniques<br>Mechanische Spezifikation |         |  |        |                                 |        | Electrical Specification<br>Spécifications Électriques<br>Elektrische Daten |                           |  |                |   |                | Dimensional Specification (mm)<br>Spécifications Dimensionnelles<br>Dimensionale Spezifikation |     |     |     |        |         |     |     |    |          |     |     |     |            |
|--|--------------------------|--|---------|--|--------|---------------------------------|--------|---|---------------------------|--|----------------|---|----------------|--|-----|-----|-----|--------|---------|-----|-----|----|----------|-----|-----|-----|------------|
| Frame Size<br>Type<br>Gehäusegröße         | Temp.<br>Class<br>Klasse | Centrifugal Force<br>Force Centrifuge<br>Fliehkraft                                  |         | Working Moment<br>Moment de Travail<br>Arbeitsmoment<br>Kg.cm.<br>(x2) |        | Weight<br>Poids<br>Gewicht (Kg) |        | Watts<br>Puissance<br>Leistung  |                           | Full Load Current<br>Le Courant plein de<br>Chargement<br>Volle Lastströmung |                | Starting Current<br>Courant commençant<br>Anfangende Strömung |                | A  | B   | C   | D   | E      | F       | G   | H   | J  | K        | L   | M   | N   |            |
|  |                          | Kg   | Newtons | 50 Hz.   | 60 Hz. | 50 Hz.                          | 60 Hz. | Input<br>D'entrée<br>Auf  | Output<br>De sortie<br>Ab | 400v<br>50 Hz.   | 460v<br>60 Hz. | 400v<br>50 Hz.  | 460v<br>60 Hz. |  |     |     |     |        |         |     |     |    |          |     |     |     |            |
| BLz 03                                     | -1/2                     | T5   | 100     | 981  | 2.2    | 1.5                             | 5      | 4.8   | 170                       | 120  | 0.19           | 0.17  | 1.6            | 1.4  | 232 | 85  | 125 | *30/46 | *85/102 | 112 | 53  | 8  | 4 x 9    | 141 | 109 | 40  | M16x1.5-6H |
| BLz 05                                     | -2/2                     | T3   | 200     | 1962   | 4.3    | 3.0                             | 8.5    | 8.2   | 335                       | 200  | 0.35           | 0.31  | 3.0            | 2.6  | 224 | 132 | 132 | 102    | 102     | 160 | 77  | 16 | 4 x 10.5 | 164 | 157 | 44  | M20x1.5-6H |
| BLz 15                                     | -3.5/2                   | T4   | 350     | 3433   | 7.6    | 5.3                             | 11     | 10.7  | 450                       | 300  | 0.56           | 0.50  | 3.0            | 2.6  | 304 | 154 | 172 | 114    | 153     | 171 | 87  | 16 | 4 x 10.5 | 180 | 173 | 64  | M20x1.5-6H |
| BLz 20                                     | -5/2                     | T4   | 500     | 4905   | 10.8   | 7.5                             | 12     | 11.6  | 450                       | 400  | 0.78           | 0.69  | 5.6            | 4.9  | 270 | 150 | 171 | 110    | 140     | 185 | 87  | 16 | 4 x 14   | 186 | 179 | 47  | M20x1.5-6H |
| BLz 22                                     | -5/2                     | T4   | 500     | 4905   | 10.8   | 7.5                             | 19     | 19  | 450                       | 400  | 0.78           | 0.69  | 5.6            | 4.9  | 270 | 150 | 171 | 110    | 140     | 185 | 87  | 16 | 4 x 14   | 186 | 179 | 47  | M20x1.5-6H |
| BLz 24                                     | -8/2                     | T4   | 800     | 7848   | 17.2   | 12.0                            | 27     | 26.5  | 665                       | 500  | 1.17           | 1.05  | 10.2           | 8.9  | 363 | 190 | 225 | 150    | 185     | 258 | 120 | 40 | 4 x 17   | 252 | 249 | 56  | M20x1.5-6H |
| BLz 24                                     | -10/2                    | T4   | 1000    | 9810   | 21.6   | 15.0                            | 27.5   | 27  | 665                       | 500  | 1.17           | 1.05  | 10.2           | 8.9  | 363 | 190 | 225 | 150    | 185     | 258 | 120 | 40 | 4 x 17   | 252 | 249 | 56  | M20x1.5-6H |
| BLz 24                                     | -13/2                    | T4   | 1300    | 12753  | 28.0   | 19.5                            | 28     | 27.5  | 665                       | 500  | 1.17           | 1.05  | 10.2           | 8.9  | 363 | 190 | 225 | 150    | 185     | 258 | 120 | 40 | 4 x 17   | 252 | 249 | 56  | M20x1.5-6H |
| BLz 25                                     | -8/2                     | T4   | 800     | 7848   | 17.2   | 12.0                            | 37     | 36.5  | 665                       | 500  | 1.17           | 1.05  | 10.2           | 8.9  | 363 | 190 | 225 | 150    | 185     | 261 | 120 | 40 | 4 x 17   | 252 | 249 | 56  | M20x1.5-6H |
| BLz 25                                     | -10/2                    | T4   | 1000    | 9810   | 21.6   | 15.0                            | 37.5   | 37  | 665                       | 500  | 1.17           | 1.05  | 10.2           | 8.9  | 363 | 190 | 225 | 150    | 185     | 261 | 120 | 40 | 4 x 17   | 252 | 249 | 56  | M20x1.5-6H |
| BLz 25                                     | -13/2                    | T4   | 1300    | 12753  | 28.0   | 19.5                            | 38     | 37.5  | 665                       | 500  | 1.17           | 1.05  | 10.2           | 8.9  | 363 | 190 | 225 | 150    | 185     | 261 | 120 | 40 | 4 x 17   | 252 | 249 | 56  | M20x1.5-6H |
| BLz 30                                     | -16/2                    | T4   | 1600    | 15696  | 34.5   | 24.0                            | 61     | 60  | 1410                      | 1100   | 2.1            | 1.8   | 23             | 20   | 476 | 200 | 250 | 160    | 210     | 294 | 140 | 40 | 4 x 17   | 290 | 287 | 105 | M20x1.5-6H |
| BLz 30                                     | -20/2                    | T4   | 2000    | 19620  | 43.2   | 30.0                            | 62     | 61  | 1410                      | 1100   | 2.1            | 1.8   | 23             | 20   | 476 | 200 | 250 | 160    | 210     | 294 | 140 | 40 | 4 x 17   | 290 | 287 | 105 | M20x1.5-6H |
| BLz 40                                     | -30/2                    | T4   | 3000    | 29430  | 64.7   | 44.9                            | 97     | 96  | 1875                      | 1500   | 2.9            | 2.5   | 35             | 30   | 598 | 220 | 320 | 170    | 270     | 359 | 170 | 60 | 4 x 26   | 326 | 349 | 146 | M20x1.5-6H |
| BLz 40                                     | -40/2                    | T4   | 4000    | 39240  | 86.3   | 60.0                            | 102    | 101   | 1875                      | 1500   | 2.9            | 2.5   | 35             | 30   | 598 | 220 | 320 | 170    | 270     | 359 | 170 | 60 | 4 x 26   | 326 | 349 | 146 | M20x1.5-6H |
| BLz 45                                     | -50/2                    | T4   | 5000    | 49050  | 108.0  | 75.0                            | 150    | 146   | 4632                      | 4000   | 7.3            | 6.4   | 93             | 83   | 722 | 298 | 357 | 248    | 305     | 380 | 175 | 60 | 4 x 26   | 355 | 364 | 178 | M25x1.5-6H |



# BLz Range

4 POLE - 1440 / 1728 RPM - 50/60 HERTZ



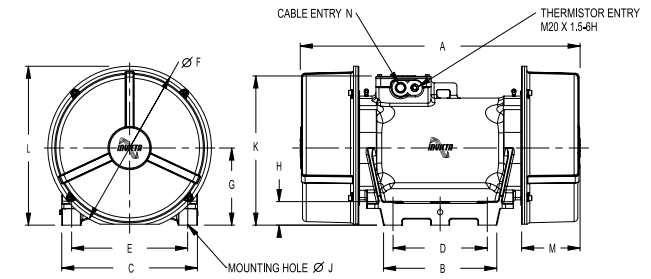
| Description<br>Description<br>Beschreibung |                                    | Mechanical Specification<br>Caractéristiques Mécaniques<br>Mechanische Spezifikation |         |  |        |                                 |        | Electrical Specification<br>Spécifications Électriques<br>Elektrische Daten |                           |  |                |   |                | Dimensional Specification (mm)<br>Spécifications Dimensionnelles<br>Dimensionale Spezifikation |     |     |     |     |        |         |     |     |    |          |     |     |     |            |
|--|------------------------------------|--|---------|--|--------|---------------------------------|--------|---|---------------------------|--|----------------|---|----------------|--|-----|-----|-----|-----|--------|---------|-----|-----|----|----------|-----|-----|-----|------------|
| Frame Size<br>Type<br>Gehäusegröße         | Temp.<br>Class<br>Classe<br>Klasse | Centrifugal Force<br>Force Centrifuge<br>Fliehkraft                                  |         | Working Moment<br>Moment de Travail<br>Arbeitsmoment<br>Kg.cm.<br>(x2) |        | Weight<br>Poids<br>Gewicht (Kg) |        | Watts<br>Puissance<br>Leistung  |                           | Full Load Current<br>Le Courant plein de<br>Chargement<br>Volle Lastströmung |                | Starting Current<br>Courant commençant<br>Anfangende Strömung |                |  |     |     |     |     |        |         |     |     |    |          |     |     |     |            |
|  |                                    | Kg   | Newtons | 50 Hz.   | 60 Hz. | 50 Hz.                          | 60 Hz. | Input<br>D'entrée<br>Auf  | Output<br>De sortie<br>Ab | 400v<br>50 Hz.   | 460v<br>60 Hz. | 400v<br>50 Hz.  | 460v<br>60 Hz. | A  | B   | C   | D   | E   | F      | G       | H   | J   | K  | L        | M   | N   |     |            |
| BLz 03                                     | -0.5/4                             |  | T4      | 50   | 490    | 4.3                             | 3.0    | 5.5   | 5.2                       | 195  | 100            | 0.20  | 0.18           | 0.8  | 0.7 | 232 | 85  | 125 | *30/46 | *85/102 | 112 | 53  | 8  | 4 x 9    | 141 | 109 | 40  | M16x1.5-6H |
| BLz 05                                     | -1/4                               |  | T4      | 100  | 981    | 8.6                             | 6.0    | 9   | 8.6                       | 240  | 175            | 0.41  | 0.37           | 1.7  | 1.4 | 224 | 132 | 132 | 102    | 102     | 160 | 77  | 16 | 4 x 10.5 | 164 | 157 | 44  | M20x1.5-6H |
| BLz 05                                     | -2/4                               |  | T4      | 200  | 1962   | 17.2                            | 12.0   | 10.5  | 10.1                      | 240  | 175            | 0.41  | 0.37           | 1.7  | 1.4 | 262 | 132 | 132 | 102    | 102     | 160 | 77  | 16 | 4 x 10.5 | 164 | 157 | 63  | M20x1.5-6H |
| BLz 15                                     | -3/4                               |  | T4      | 300  | 2943   | 26.0                            | 18.0   | 13  | 12.2                      | 450  | 300            | 0.71  | 0.64           | 2.3  | 2.0 | 304 | 154 | 172 | 114    | 153     | 171 | 87  | 16 | 4 x 10.5 | 180 | 173 | 64  | M20x1.5-6H |
| BLz 20                                     | -5/4                               |  | T4      | 500  | 4905   | 43.1                            | 29.9   | 17  | 16                        | 450  | 350            | 0.97  | 0.88           | 3.6  | 3.1 | 330 | 150 | 171 | 110    | 140     | 185 | 87  | 16 | 4 x 14   | 186 | 179 | 74  | M20x1.5-6H |
| BLz 22                                     | -5/4                               |  | T4      | 500  | 4905   | 43.1                            | 29.9   | 24  | 23                        | 450  | 350            | 0.97  | 0.88           | 3.6  | 3.1 | 330 | 150 | 171 | 110    | 140     | 185 | 87  | 16 | 4 x 14   | 186 | 179 | 74  | M20x1.5-6H |
| BLz 22                                     | -7.2/4                             | ∅  | T4      | 720  | 7063   | -                               | 43.1   | -   | 24                        | 450  | 350            | -   | 0.88           | -  | 3.1 | 330 | 150 | 171 | 110    | 140     | 185 | 87  | 16 | 4 x 14   | 186 | 179 | 74  | M20x1.5-6H |
| BLz 24                                     | -7.5/4                             |  | T4      | 750  | 7357   | 64.7                            | 44.9   | 32  | 31                        | 675  | 500            | 1.32  | 1.22           | 8.7  | 7.6 | 413 | 190 | 225 | 150    | 185     | 258 | 120 | 40 | 4 x 17   | 252 | 249 | 82  | M20x1.5-6H |
| BLz 24                                     | -11/4                              |  | T4      | 1100   | 10790  | 94.9                            | 65.9   | 35  | 33                        | 675  | 500            | 1.32  | 1.22           | 8.7  | 7.6 | 413 | 190 | 225 | 150    | 185     | 258 | 120 | 40 | 4 x 17   | 252 | 249 | 82  | M20x1.5-6H |
| BLz 24                                     | -14/4                              |  | T4      | 1400   | 13735  | 121                             | 84.0   | 38  | 36                        | 675  | 500            | 1.32  | 1.22           | 8.7  | 7.6 | 413 | 190 | 225 | 150    | 185     | 258 | 120 | 40 | 4 x 17   | 252 | 249 | 82  | M20x1.5-6H |
| BLz 25                                     | -7.5/4                             |  | T4      | 750  | 7357   | 64.7                            | 44.9   | 42  | 41                        | 675  | 500            | 1.32  | 1.22           | 8.7  | 7.6 | 413 | 190 | 225 | 150    | 185     | 261 | 120 | 40 | 4 x 17   | 252 | 249 | 82  | M20x1.5-6H |
| BLz 25                                     | -11/4                              |  | T4      | 1100   | 10790  | 94.9                            | 65.9   | 45  | 43                        | 675  | 500            | 1.32  | 1.22           | 8.7  | 7.6 | 413 | 190 | 225 | 150    | 185     | 261 | 120 | 40 | 4 x 17   | 252 | 249 | 82  | M20x1.5-6H |
| BLz 25                                     | -14/4                              |  | T4      | 1400   | 13735  | 121                             | 84.0   | 47  | 45                        | 675  | 500            | 1.32  | 1.22           | 8.7  | 7.6 | 413 | 190 | 225 | 150    | 185     | 261 | 120 | 40 | 4 x 17   | 252 | 249 | 82  | M20x1.5-6H |
| BLz 30                                     | -18/4                              |  | T4      | 1800   | 17658  | 155                             | 107.6  | 75  | 72                        | 1335   | 1150           | 2.50  | 2.2            | 24.0   | 21  | 476 | 200 | 250 | 160    | 210     | 294 | 140 | 40 | 4 x 17   | 290 | 287 | 105 | M20x1.5-6H |
| BLz 30                                     | -25/4                              |  | T4      | 2500   | 24525  | 216                             | 150    | 78  | 75                        | 1335   | 1150           | 2.50  | 2.2            | 24.0   | 21  | 476 | 200 | 250 | 160    | 210     | 294 | 140 | 40 | 4 x 17   | 290 | 287 | 105 | M20x1.5-6H |
| BLz 40                                     | -35/4                              |  | T4      | 3500   | 34335  | 302                             | 209    | 112   | 109                       | 2150   | 1800           | 3.70  | 3.3            | 32.0   | 28  | 598 | 220 | 320 | 170    | 270     | 359 | 170 | 60 | 4 x 26   | 326 | 349 | 146 | M20x1.5-6H |
| BLz 45                                     | -45/4                              |  | T4      | 4500   | 44145  | 388                             | 269    | 153   | 149                       | 3050   | 2685           | 5.30  | 4.8            | 57.0   | 50  | 722 | 298 | 357 | 248    | 305     | 380 | 175 | 60 | 4 x 26   | 355 | 364 | 178 | M25x1.5-6H |
| BLz 50                                     | -55/4                              |  | T4      | 5500   | 53955  | 474                             | 329    | 202   | 197                       | 3740   | 3350           | 6.40  | 5.7            | 74.0   | 64  | 734 | 298 | 357 | 248    | 305     | 430 | 203 | 60 | 6 x 26   | 402 | 418 | 153 | M25x1.5-6H |
| BLz 50                                     | -65/4                              |  | T4      | 6500   | 63765  | 560                             | 388    | 231   | 225                       | 5280   | 4800           | 8.60  | 7.6            | 88.0   | 77  | 734 | 298 | 357 | 248    | 305     | 430 | 203 | 60 | 6 x 26   | 402 | 418 | 153 | M25x1.5-6H |
| BLz 50                                     | -75/4                              |  | T4      | 7500   | 73575  | 647                             | 449    | 235   | 229                       | 5280   | 4800           | 8.60  | 7.6            | 88.0   | 77  | 734 | 298 | 357 | 248    | 305     | 430 | 203 | 60 | 6 x 26   | 402 | 418 | 153 | M25x1.5-6H |
| BLz 60                                     | -95/4                              |  | T4      | 9500   | 93195  | 820                             | 569    | 362   | 355                       | 8410   | 7750           | 12.90   | 11.3           | 190  | 165 | 844 | 295 | 454 | 235    | 394     | 490 | 233 | 70 | 6 x 26   | 453 | 478 | 187 | M32x1.5-6H |
| BLz 60                                     | -105/4                             |  | T4      | 10500  | 103000 | 906                             | 629    | 366   | 359                       | 8410   | 7750           | 12.90   | 11.3           | 190  | 165 | 844 | 295 | 454 | 235    | 394     | 490 | 233 | 70 | 6 x 26   | 453 | 478 | 187 | M32x1.5-6H |
| BLz 75                                     | -130/4                             |  | T4      | 13000  | 127530 | 1122                            | 779    | 430   | 420                       | 11020  | 10250          | 16.70   | 14.6           | 223  | 194 | 826 | 295 | 454 | 235    | 394     | 493 | 233 | 70 | 6 x 31   | 453 | 478 | 187 | M32x1.5-6H |

∅ Nur / Seulement 60 Hertz ONLY



# BLz Range

6 POLE - 960 / 1152 RPM - 50/60 HERTZ



| Description<br>Description<br>Beschreibung |                          | Mechanical Specification<br>Caractéristiques Mécaniques<br>Mechanische Spezifikation |         |  |        |                                 |        | Electrical Specification<br>Spécifications Électriques<br>Elektrische Daten |                           |  |                |   |                | Dimensional Specification (mm)<br>Spécifications Dimensionnelles<br>Dimensionale Spezifikation |      |      |     |     |        |         |     |     |    |          |     |     |     |            |
|--|--------------------------|--|---------|--|--------|---------------------------------|--------|---|---------------------------|--|----------------|---|----------------|--|------|------|-----|-----|--------|---------|-----|-----|----|----------|-----|-----|-----|------------|
| Frame Size<br>Type<br>Gehäusegröße         | Temp.<br>Class<br>Klasse | Centrifugal Force<br>Force Centrifuge<br>Fliehkraft                                  |         | Working Moment<br>Moment de Travail<br>Arbeitsmoment<br>Kg.cm.<br>(x2) |        | Weight<br>Poids<br>Gewicht (Kg) |        | Watts<br>Puissance<br>Leistung  |                           | Full Load Current<br>Le Courant plein de<br>Chargement<br>Volle Lastströmung |                | Starting Current<br>Courant commençant<br>Anfangende Strömung |                |  |      |      |     |     |        |         |     |     |    |          |     |     |     |            |
|  |                          | Kg   | Newtons | 50 Hz.   | 60 Hz. | 50 Hz.                          | 60 Hz. | Input<br>D'entrée<br>Auf  | Output<br>De sortie<br>Ab | 400v<br>50 Hz.   | 460v<br>60 Hz. | 400v<br>50 Hz.  | 460v<br>60 Hz. | A  | B    | C    | D   | E   | F      | G       | H   | J   | K  | L        | M   | N   |     |            |
| BLz 03                                     | -0.2/6                   | □  | T5      | 22   | 216    | 43.0                            | -      | 5.5   | -                         | 143  | 70             | 0.46  | -              | 0.5  | -    | 232  | 85  | 125 | *30/46 | *58/102 | 112 | 53  | 8  | 4 x 9    | 141 | 109 | 40  | M16x1.5-6H |
| BLz 03                                     | -0.3/6                   | ◇  | T5      | 32   | 314    | -                               | 4.3    | -   | 5.5                       | 143  | 70             | -   | 0.41           | -  | 0.45 | 232  | 85  | 125 | *30/46 | *58/102 | 112 | 53  | 8  | 4 x 9    | 141 | 109 | 40  | M16x1.5-6H |
| BLz 05                                     | -0.4/6                   | □  | T4      | 40   | 392    | 7.8                             | -      | 9   | -                         | 204  | 90             | 0.54  | -              | 0.9  | -    | 262  | 132 | 132 | 102    | 102     | 160 | 77  | 16 | 4 x 10.5 | 164 | 157 | 63  | M20x1.5-6H |
| BLz 05                                     | -0.6/6                   | ◇  | T4      | 60   | 589    | -                               | 11.6   | -   | 9                         | 204  | 90             | -   | 0.5            | -  | 0.8  | 262  | 132 | 132 | 102    | 102     | 160 | 77  | 16 | 4 x 10.5 | 164 | 157 | 63  | M20x1.5-6H |
| BLz 05                                     | -0.9/6                   | □  | T4      | 90   | 883    | 17.5                            | -      | 10.5  | -                         | 204  | 90             | 0.54  | -              | 0.9  | -    | 262  | 132 | 132 | 102    | 102     | 160 | 77  | 16 | 4 x 10.5 | 164 | 157 | 63  | M20x1.5-6H |
| BLz 05                                     | -1.3/6                   | ◇  | T4      | 130  | 1275   | -                               | 17.5   | -   | 10.5                      | 204  | 90             | -   | 0.5            | -  | 0.8  | 262  | 132 | 132 | 102    | 102     | 160 | 77  | 16 | 4 x 10.5 | 164 | 157 | 63  | M20x1.5-6H |
| BLz 15                                     | -1.3/6                   | □  | T4      | 130  | 1275   | 25.2                            | -      | 13  | -                         | 245  | 110            | 0.60  | -              | 0.9  | -    | 304  | 154 | 172 | 114    | 153     | 171 | 87  | 16 | 4 x 10.5 | 180 | 173 | 64  | M20x1.5-6H |
| BLz 15                                     | -1.9/6                   | ◇  | T4      | 190  | 1864   | -                               | 29.6   | -   | 13                        | 245  | 110            | -   | 0.54           | -  | 0.81 | 304  | 154 | 172 | 114    | 153     | 171 | 87  | 16 | 4 x 10.5 | 180 | 173 | 64  | M20x1.5-6H |
| BLz 20                                     | -2.2/6                   | □  | T4      | 220  | 2158   | 42.7                            | -      | 17  | -                         | 321  | 150            | 0.9   | -              | 1.6  | -    | 330  | 150 | 171 | 110    | 140     | 185 | 87  | 16 | 4 x 14   | 186 | 179 | 74  | M20x1.5-6H |
| BLz 22                                     | -2.2/6                   | □  | T4      | 220  | 2158   | 42.7                            | -      | 24  | -                         | 321  | 150            | 0.9   | -              | 1.6  | -    | 330  | 150 | 171 | 110    | 140     | 185 | 87  | 16 | 4 x 14   | 186 | 179 | 74  | M20x1.5-6H |
| BLz 24                                     | -4/6                     | □  | T4      | 400  | 3924   | 77.6                            | 53.8   | 34  | 32                        | 747  | 510            | 1.61  | 1.46           | 7.0  | 6.01 | 413  | 190 | 225 | 150    | 185     | 258 | 120 | 40 | 4 x 17   | 252 | 249 | 82  | M20x1.5-6H |
| BLz 24                                     | -8/6                     | □  | T4      | 800  | 7848   | 155.0                           | 107.6  | 43  | 40                        | 747  | 510            | 1.61  | 1.46           | 7.0  | 6.1  | 493  | 190 | 225 | 150    | 185     | 258 | 120 | 40 | 4 x 17   | 252 | 249 | 122 | M20x1.5-6H |
| BLz 24                                     | -11/6                    | □  | T4      | 1100   | 10790  | 213.0                           | 148.0  | 49  | 45                        | 747  | 510            | 1.61  | 1.46           | 7.0  | 6.1  | 493  | 190 | 225 | 150    | 185     | 258 | 120 | 40 | 4 x 17   | 252 | 249 | 122 | M20x1.5-6H |
| BLz 25                                     | -4/6                     | □  | T4      | 400  | 3924   | 77.6                            | 53.8   | 43  | 41                        | 747  | 510            | 1.61  | 1.46           | 7.0  | 6.1  | 413  | 190 | 225 | 150    | 185     | 261 | 120 | 40 | 4 x 17   | 252 | 249 | 82  | M20x1.5-6H |
| BLz 25                                     | -8/6                     | □  | T4      | 800  | 7848   | 155.0                           | 107.6  | 51  | 48                        | 747  | 510            | 1.61  | 1.46           | 7.0  | 6.1  | 493  | 190 | 225 | 150    | 185     | 261 | 120 | 40 | 4 x 17   | 252 | 249 | 122 | M20x1.5-6H |
| BLz 25                                     | -11/6                    | □  | T4      | 1100   | 10790  | 213.0                           | 148.0  | 58  | 53                        | 747  | 510            | 1.61  | 1.46           | 7.0  | 6.1  | 493  | 190 | 225 | 150    | 185     | 261 | 120 | 40 | 4 x 17   | 252 | 249 | 122 | M20x1.5-6H |
| BLz 30                                     | -14/6                    | □  | T4      | 1400   | 13734  | 271.0                           | 188.0  | 87  | 82                        | 1165   | 900            | 3.0   | 2.7            | 15.0   | 13.0 | 592  | 200 | 250 | 160    | 210     | 294 | 140 | 40 | 4 x 17   | 290 | 287 | 163 | M20x1.5-6H |
| BLz 30                                     | -18/6                    | □  | T4      | 1800   | 17658  | 349.0                           | 242.0  | 90  | 85                        | 1165   | 900            | 3.0   | 2.7            | 15.0   | 13.0 | 592  | 200 | 250 | 160    | 210     | 294 | 140 | 40 | 4 x 17   | 290 | 287 | 163 | M20x1.5-6H |
| BLz 30                                     | -23/6                    | □  | T4      | 2300   | 22563  | 446.0                           | 309.0  | 99  | 93                        | 1165   | 900            | 3.0   | 2.7            | 15.0   | 13.0 | 592  | 200 | 250 | 160    | 210     | 294 | 140 | 40 | 4 x 17   | 290 | 287 | 163 | M20x1.5-6H |
| BLz 40                                     | -27/6                    | □  | T4      | 2700   | 26487  | 524.0                           | 364.0  | 129   | 124                       | 2290   | 1800           | 5.0   | 4.6            | 25.0   | 22.0 | 598  | 220 | 320 | 170    | 270     | 359 | 170 | 60 | 4 x 26   | 326 | 349 | 146 | M20x1.5-6H |
| BLz 40                                     | -35/6                    | □  | T4      | 3500   | 34335  | 680.0                           | 468.0  | 143   | 136                       | 2290   | 1800           | 5.0   | 4.6            | 25.0   | 22.0 | 598  | 220 | 320 | 170    | 270     | 359 | 170 | 60 | 4 x 26   | 326 | 349 | 146 | M20x1.5-6H |
| BLz 45                                     | -42/6                    | □  | T4      | 4200   | 41200  | 815.0                           | 566.0  | 183   | 171                       | 2690   | 2310           | 6.3   | 5.8            | 44.0   | 38.0 | 722  | 298 | 357 | 248    | 305     | 380 | 175 | 60 | 4 x 26   | 355 | 364 | 178 | M25x1.5-6H |
| BLz 45                                     | -50/6                    | □  | T4      | 5000   | 49050  | 970.0                           | 673.0  | 190   | 181                       | 2690   | 2310           | 6.3   | 5.8            | 44.0   | 38.0 | 722  | 298 | 357 | 248    | 305     | 380 | 175 | 60 | 4 x 26   | 355 | 364 | 178 | M25x1.5-6H |
| BLz 50                                     | -60/6                    | □  | T4      | 6000   | 58860  | 1164.0                          | 808.0  | 259   | 248                       | 4530   | 4000           | 8.8   | 7.9            | 61.0   | 53.0 | 734  | 298 | 357 | 248    | 305     | 430 | 203 | 60 | 6 x 26   | 402 | 418 | 153 | M25x1.5-6H |
| BLz 50                                     | -75/6                    | □  | T4      | 7500   | 73575  | 1455.0                          | 1010.0 | 288   | 274                       | 4530   | 4000           | 8.8   | 7.9            | 61.0   | 53.0 | 836  | 298 | 357 | 248    | 305     | 430 | 203 | 60 | 6 x 26   | 402 | 418 | 204 | M25x1.5-6H |
| BLz 60                                     | -90/6                    | □  | T4      | 9000   | 88290  | 1746.0                          | 1212.0 | 423   | 408                       | 6630   | 6200           | 11.2  | 10.0           | 108  | 94   | 1148 | 295 | 454 | 235    | 394     | 490 | 233 | 70 | 6 x 31   | 453 | 478 | 187 | M32x1.5-6H |
| BLz 60                                     | -105/6                   | □  | T4      | 10500  | 103000 | 2037.0                          | 1414.0 | 432   | 416                       | 6630   | 6200           | 11.2  | 10.0           | 108  | 94   | 844  | 295 | 454 | 235    | 394     | 490 | 233 | 70 | 6 x 26   | 453 | 478 | 187 | M32x1.5-6H |
| BLz 60                                     | -125/6                   | □  | T4      | 12500  | 122625 | 2425.0                          | 1685.0 | 515   | 500                       | 10820  | 10000          | 18.0  | 16.0           | 230  | 200  | 1148 | 295 | 454 | 235    | 394     | 490 | 233 | 70 | 6 x 26   | 453 | 478 | 348 | M32x1.5-6H |
| BLz 75                                     | -150/6                   | □  | T4      | 15000  | 147150 | 2910.0                          | 2020.0 | 548   | 525                       | 10820  | 10000          | 18.0  | 16.0           | 230  | 200  | 1148 | 295 | 454 | 235    | 394     | 493 | 233 | 70 | 6 x 31   | 453 | 478 | 348 | M32x1.5-6H |
| BLz 75                                     | -185/6                   | □  | T4      | 18500  | 181485 | 3589.0                          | 2491.0 | 578   | 548                       | 10820  | 10000          | 18.0  | 16.0           | 230  | 200  | 1148 | 295 | 454 | 235    | 394     | 493 | 233 | 70 | 6 x 31   | 453 | 478 | 348 | M32x1.5-6H |

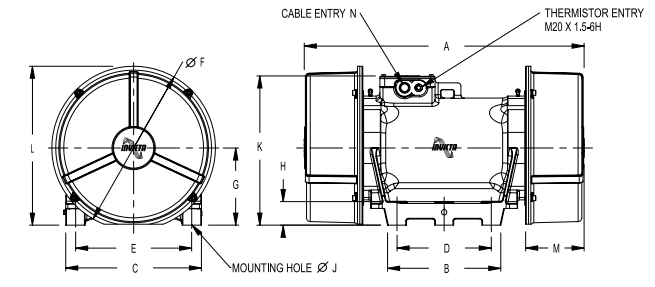
□ Nur / Seulement 50 Hertz ONLY

◇ Nur / Seulement 60 Hertz ONLY



# BLz Range

8 POLE - 720 / 864 RPM - 50/60 HERTZ



| Description<br>Description<br>Beschreibung |                          | Mechanical Specification<br>Caractéristiques Mécaniques<br>Mechanische Spezifikation |         |  |        |                                 |        | Electrical Specification<br>Spécifications Électriques<br>Elektrische Daten |                           |  |                |   |                | Dimensional Specification (mm)<br>Spécifications Dimensionnelles<br>Dimensionale Spezifikation |     |      |     |     |     |     |     |     |    |        |     |     |     |            |
|--|--------------------------|--|---------|--|--------|---------------------------------|--------|---|---------------------------|--|----------------|---|----------------|--|-----|------|-----|-----|-----|-----|-----|-----|----|--------|-----|-----|-----|------------|
| Frame Size<br>Type<br>Gehäusegröße         | Temp.<br>Class<br>Klasse | Centrifugal Force<br>Force Centrifuge<br>Fliehkraft                                  |         | Working Moment<br>Moment de Travail<br>Arbeitsmoment<br>Kg.cm.<br>(x2) |        | Weight<br>Poids<br>Gewicht (Kg) |        | Watts<br>Puissance<br>Leistung  |                           | Full Load Current<br>Le Courant plein de<br>Chargement<br>Volle Lastströmung |                | Starting Current<br>Courant commençant<br>Anfangende Strömung |                |  |     |      |     |     |     |     |     |     |    |        |     |     |     |            |
|  |                          | Kg   | Newtons | 50 Hz.   | 60 Hz. | 50 Hz.                          | 60 Hz. | Input<br>D'entrée<br>Auf  | Output<br>De sortie<br>Ab | 400v<br>50 Hz.   | 460v<br>60 Hz. | 400v<br>50 Hz.  | 460v<br>60 Hz. | A  | B   | C    | D   | E   | F   | G   | H   | J   | K  | L      | M   | N   |     |            |
| BLz 30                                     | -7.5/8                   |  |         | 750  | 7357   | 259                             | 180    | 89  | 84                        | 730  | 500            | 2.3   | 2.2            | 10.4   | 9   | 592  | 200 | 250 | 160 | 210 | 294 | 140 | 40 | 4 x 17 | 290 | 287 | 163 | M20x1.5-6H |
| BLz 30                                     | -10/8                    |  |         | 1000   | 9810   | 345                             | 239    | 94  | 89                        | 730  | 500            | 2.3   | 2.2            | 10.4   | 9   | 592  | 200 | 250 | 160 | 210 | 294 | 140 | 40 | 4 x 17 | 290 | 287 | 163 | M20x1.5-6H |
| BLz 40                                     | -15/8                    | □  | T4      | 1500   | 14715  | 517                             | -      | 127   | -                         | 1530   | 1100           | 3.6   | -              | 13.5   | -   | 598  | 220 | 320 | 170 | 270 | 359 | 170 | 60 | 4 x 26 | 326 | 349 | 146 | M20x1.5-6H |
| BLz 40                                     | -17/8                    | ◇  | T4      | 1700   | 16677  | -                               | 406    | -   | 122                       | 1530   | 1100           | -   | 3.3            | -  | 12  | 598  | 220 | 320 | 170 | 270 | 359 | 170 | 60 | 4 x 26 | 326 | 349 | 146 | M20x1.5-6H |
| BLz 45                                     | -24/8                    |  | T4      | 2430   | 23838  | 838                             | 581    | 180   | 174                       | 2465   | 2000           | 6.1   | 6.5            | 23   | 23  | 722  | 298 | 357 | 248 | 305 | 380 | 175 | 60 | 4 x 26 | 355 | 364 | 178 | M25x1.5-6H |
| BLz 45                                     | -35/8                    | ◇  | T4      | 3500   | 34335  | -                               | 838    | -   | 180                       | 2465   | 2000           | -   | 6.5            | -  | 23  | 722  | 298 | 357 | 248 | 305 | 380 | 175 | 60 | 4 x 26 | 355 | 364 | 178 | M25x1.5-6H |
| BLz 50                                     | -35/8                    | □  | T5      | 3500   | 34335  | 1207                            | -      | 266   | -                         | 3780   | 3300           | 8.6   | -              | 55   | -   | 734  | 298 | 357 | 248 | 305 | 430 | 203 | 60 | 6 x 26 | 402 | 418 | 204 | M25x1.5-6H |
| BLz 50                                     | -45/8                    |  | T5      | 4500   | 44145  | 1552                            | 1077   | 298   | 281                       | 3780   | 3300           | 8.6   | 7.8            | 55   | 48  | 836  | 298 | 357 | 248 | 305 | 430 | 203 | 60 | 6 x 26 | 402 | 418 | 204 | M25x1.5-6H |
| BLz 50                                     | -55/8                    | □  | T5      | 5500   | 53955  | 1897                            | -      | 326   | -                         | 3780   | 3300           | 8.6   | -              | 55   | -   | 836  | 298 | 357 | 248 | 305 | 430 | 203 | 60 | 6 x 26 | 402 | 418 | 204 | M25x1.5-6H |
| BLz 50                                     | -57/8                    | ◇  | T4      | 5700   | 55917  | -                               | 1362   | -   | 305                       | 3780   | 3300           | -   | 7.8            | -  | 48  | 836  | 298 | 357 | 248 | 305 | 430 | 203 | 60 | 6 x 26 | 402 | 418 | 204 | M25x1.5-6H |
| BLz 60                                     | -65/8                    | □  | T4      | 6500   | 63765  | 2242                            | -      | 434   | -                         | 5645   | 4900           | 13.3  | -              | 97   | -   | 844  | 295 | 454 | 235 | 394 | 490 | 233 | 70 | 6 x 26 | 453 | 478 | 187 | M32x1.5-6H |
| BLz 60                                     | -70/8                    | ◇  | T4      | 7000   | 68670  | -                               | 1673   | -   | 421                       | 5645   | 4900           | -   | 12.1           | -  | 84  | 844  | 295 | 454 | 235 | 394 | 490 | 233 | 70 | 6 x 26 | 453 | 478 | 187 | M32x1.5-6H |
| BLz 60                                     | -90/8                    | □  | T4      | 9000   | 88290  | 3105                            | -      | 484   | -                         | 5645   | 4900           | 13.3  | -              | 97   | -   | 1176 | 295 | 454 | 235 | 394 | 490 | 233 | 70 | 6 x 26 | 453 | 478 | 348 | M32x1.5-6H |
| BLz 60                                     | -90/8                    | ◇  | T4      | 9000   | 88290  | -                               | 2155   | -   | 433                       | 5645   | 4900           | -   | 12.1           | -  | 84  | 844  | 295 | 454 | 235 | 394 | 490 | 233 | 70 | 6 x 26 | 453 | 478 | 187 | M32x1.5-6H |
| BLz 75                                     | -124/8                   | □  | T4      | 12400  | 121644 | 4279                            | -      | 630   | -                         | 8940   | 7750           | 20.1  | -              | 124  | -   | 1288 | 295 | 454 | 235 | 394 | 493 | 233 | 70 | 6 x 31 | 453 | 478 | 420 | M32x1.5-6H |
| BLz 75                                     | -135/8                   |  | T4      | 13500  | 132435 | 4658                            | 3235   | 682   | 600                       | 8940   | 7750           | 20.1  | 18.1           | 124  | 108 | 1288 | 295 | 454 | 235 | 394 | 493 | 233 | 70 | 6 x 31 | 453 | 478 | 420 | M32x1.5-6H |
| BLz 75                                     | -150/8                   | □  | T4      | 15000  | 147150 | 5174                            | -      | 702   | -                         | 8940   | 7750           | 20.1  | -              | 124  | -   | 1288 | 295 | 454 | 235 | 394 | 493 | 233 | 70 | 6 x 31 | 453 | 478 | 420 | M32x1.5-6H |
| BLz 75                                     | -150/8                   | ◇  | T4      | 15000  | 147150 | -                               | 3592   | -   | 621                       | 8940   | 7750           | -   | 18.1           | -  | 108 | 1148 | 295 | 454 | 235 | 394 | 493 | 233 | 70 | 6 x 31 | 453 | 478 | 348 | M32x1.5-6H |
| BLz 75/77                                  | -200/8                   | ◇  |         | 20000  | 196200 | -                               | 4793   | -   | 702                       | 8940   | 7750           | -   | 18.1           | -  | 108 | 1228 | 295 | 474 | 235 | 394 | 493 | 233 | 70 | 6 x 38 | 453 | 478 | 420 | M32x1.56H  |

□ Nur / Seulement 50 Hertz ONLY

◇ Nur / Seulement 60 Hertz ONLY